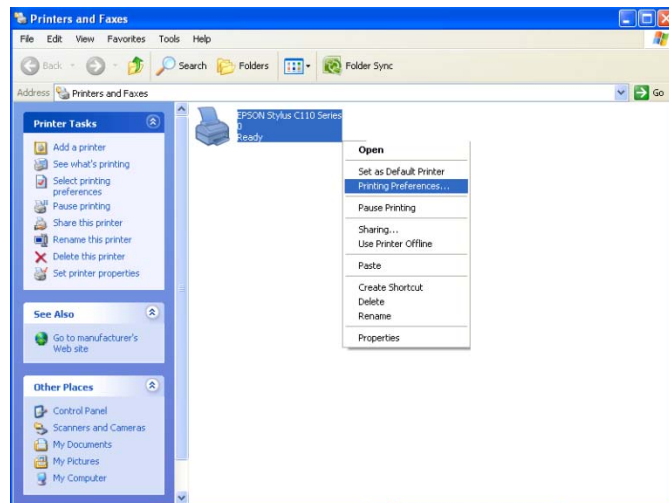


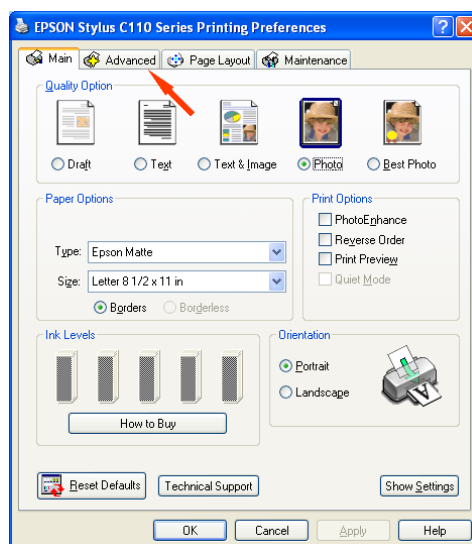
# Configuring the Epson Stylus C110 Series Print Driver for Sublimation ICC Profile

To configure the print driver for the Epson Stylus Photo C110 Series follow the subsequent instructions:

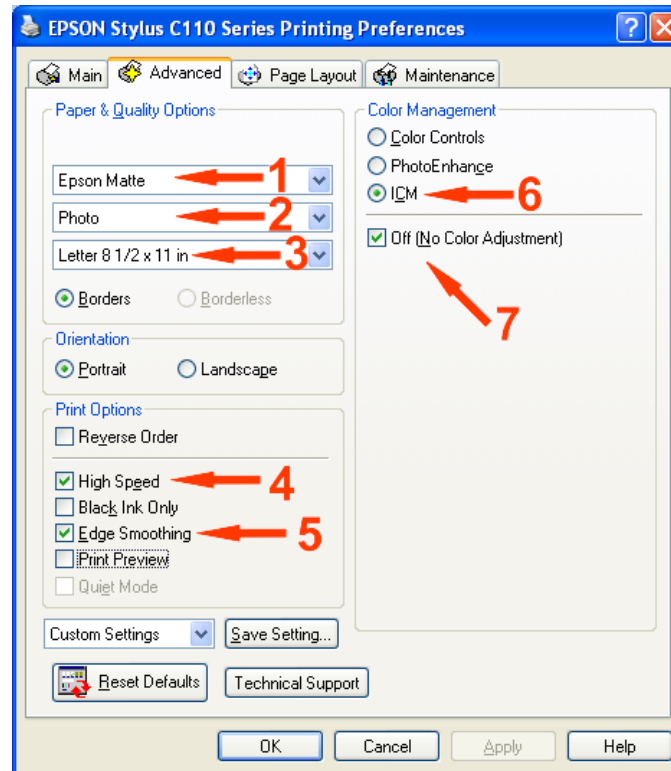
1. Open **'Printer & Faxes'**: Start → Control Panel → Printers & Faxes
2. Open the **'Printing Preferences'** window: Right click the icon **'Epson Stylus C110 Series'** and select **'Printing Preferences'**.



3. The Printer Driver Properties window will now be open: Open the **'Advanced'** tab.

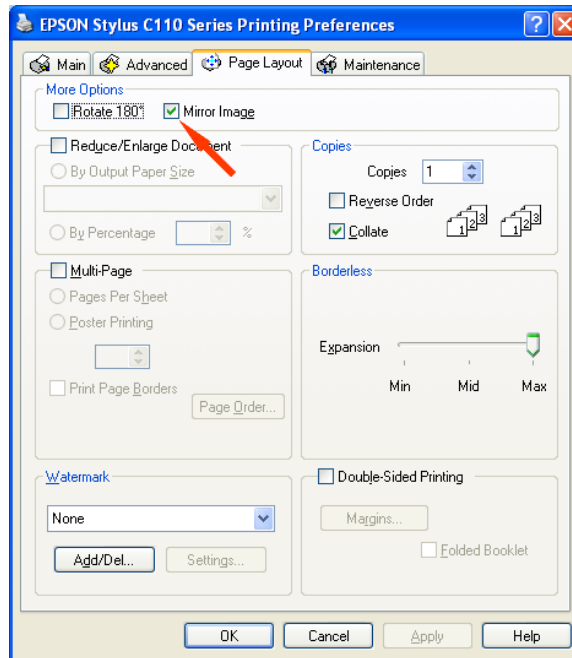


4. The advanced window will now be open: Select the settings as shown below.



- 1** Media Type: **'Epson Matte'**
- 2** Print Quality: **'Photo'**
- 3** Paper Size **'Letter'**
- 4** Check **'High Speed'**
- 5** Check **'Edge Smoothing'**
- 6** Check **'ICM'**
- 7** Check **'No Color Adjustment'**

5. Select the 'Page Layout' tab,



**1** Check 'Mirror Image'

6. Select the 'Advanced' tab and Click on 'Save Settings' and enter an appropriate name, and click save.

