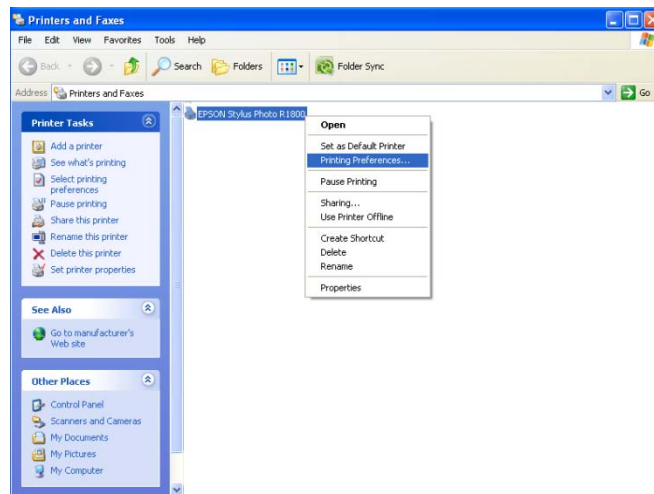


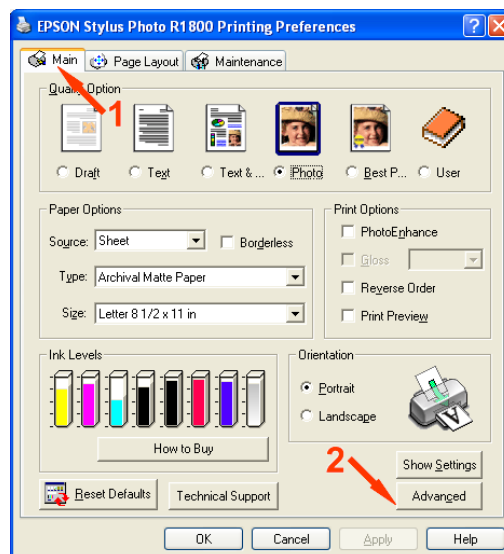
Configuring the Epson Stylus Photo R1800 Print Driver for Sublimation ICC Profile

To configure the print driver for the Epson Stylus Photo R1800 follow the subsequent instructions:

1. Open **'Printer & Faxes'**: Start → Control Panel → Printers & Faxes
2. Open the **'Printing Preferences'** window: Right click the icon **'Epson Stylus Photo R1800'** and select **'Printing Preferences'**.

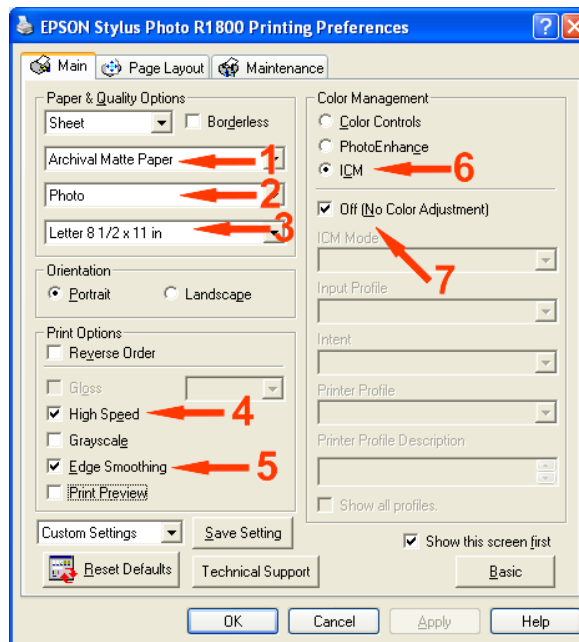


3. The Printer Driver Properties window will now be open:



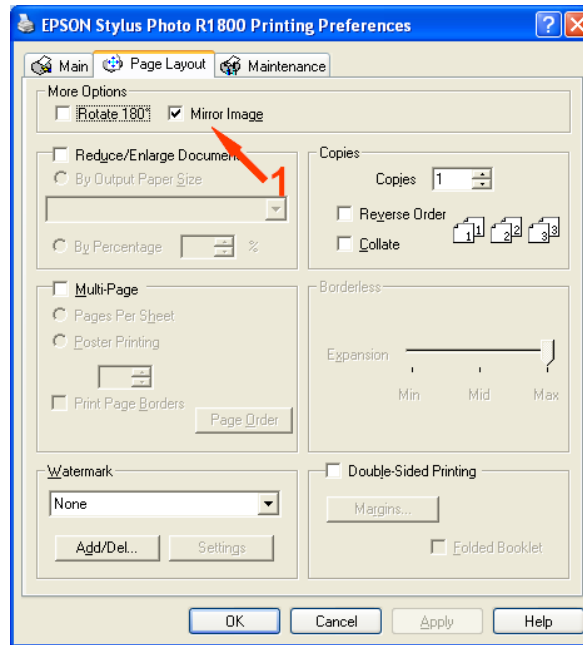
- 1 Open the **'Main'** tab, shown at point 1.
- 2 Click **'Advanced'**.

4. The advanced window will now be open: Select the settings as shown below.



- 1 Media Type: **'Archival Matte Paper'**
- 2 Print Quality: **'Photo'**
- 3 Paper Size **'Letter'**
- 4 Check **'High Speed'**
- 5 Check **'Edge Smoothing'**
- 6 Check **'ICM'**
- 7 Check **'No Color Adjustment'**

5. Select the 'Page Layout' tab



- 1 Check 'Mirror Image'

6. Select the 'Main' tab and Click on 'Save Settings' and enter an appropriate name, and click save.

