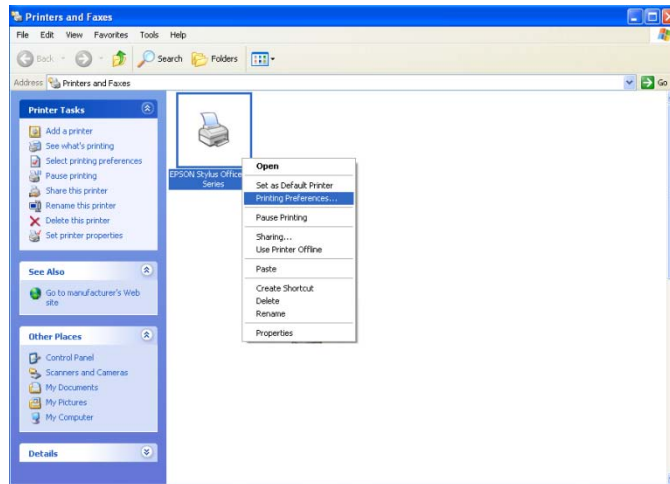


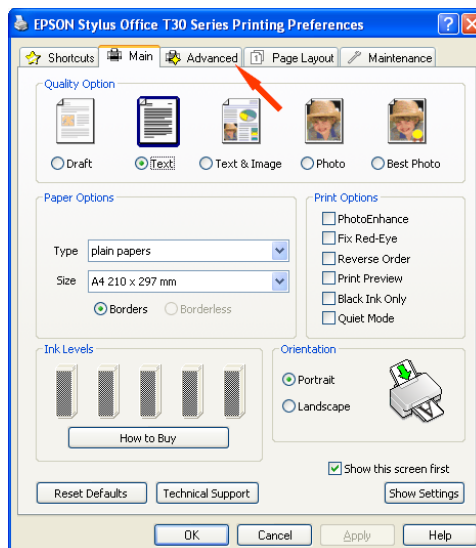
Configuring the Epson Stylus Office T30 Print Driver for Sublimation ICC Profiles

To configure the print driver for the Epson Stylus Office T30 Series follow the subsequent instructions:

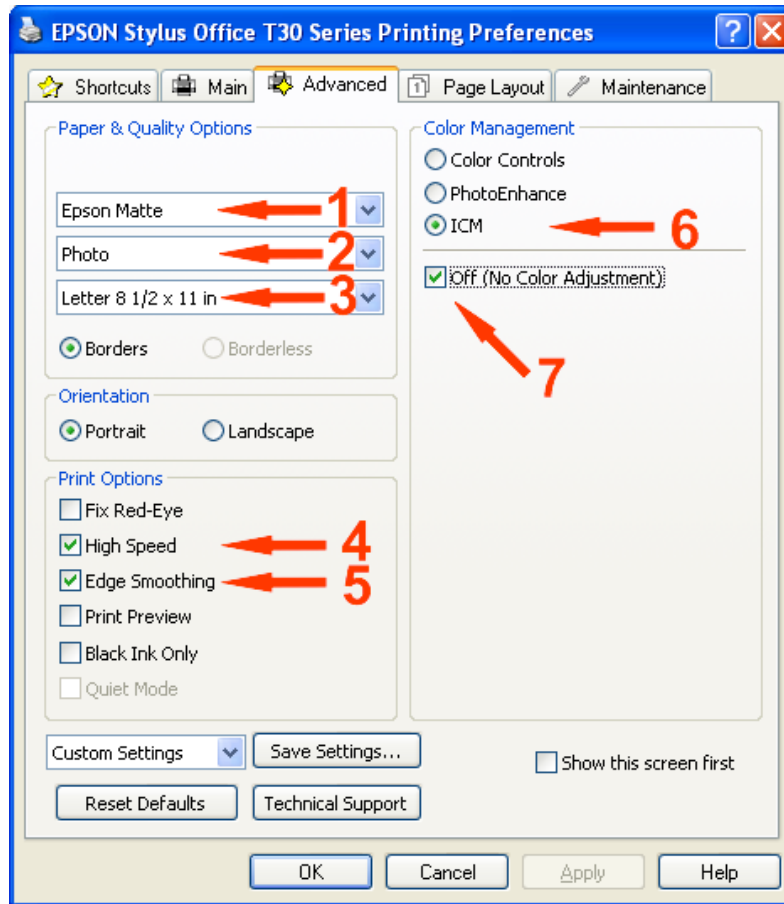
1. Open **'Printer & Faxes'**: Start → Control Panel → Printers & Faxes
2. Open the **'Printing Preferences'** window: Right click the icon **'Epson Stylus Office T30'** and select **'Printing Preferences'**.



3. The Printer Driver Properties window will now be open: Open the **'Advanced'** tab.

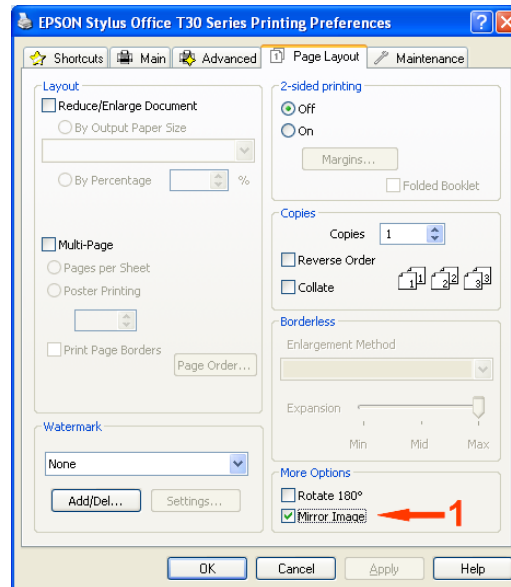


4. The advanced window will now be open: Select the settings as shown below.



- 1 Media Type: 'Epson Matte'
- 2 Print Quality: 'Photo'
- 3 Paper Size 'Letter'
- 4 Check 'High Speed'
- 5 Check 'Edge Smoothing'
- 6 Check 'ICM'
- 7 Check 'No Color Adjustment'

5. Select the 'Page Layout' tab,



- 1** Check 'Mirror Image'

6. Select the 'Advanced' tab and Click on 'Save Settings' and enter an appropriate name, and click save.

