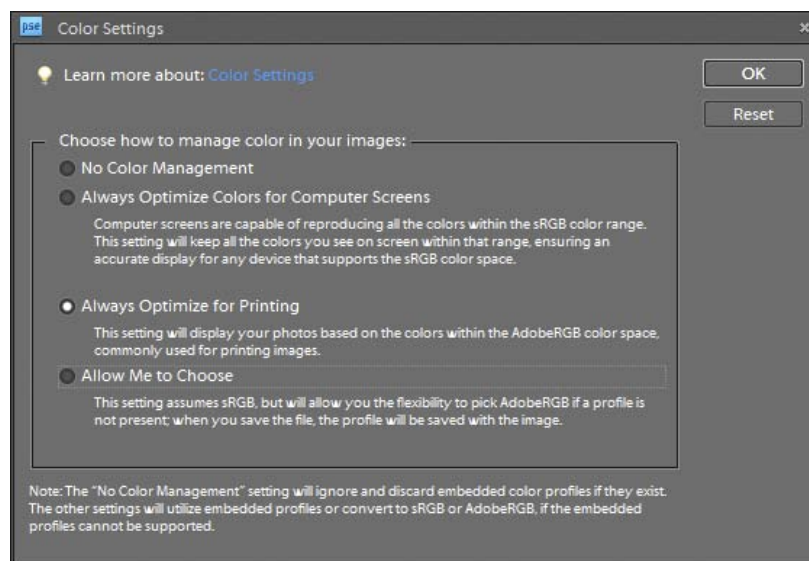


Configuring Photoshop Elements 8 Colour Settings for Use with Sublimation on EPSON 1400

Photoshop's color space needs to be set to the working space of which the appropriate sublimation ICC profile was created. This then allows for a more accurate screen display of your images. The accuracy of the displayed image on your monitor will highly be dependent on the quality of your monitor and more important a calibrated monitor ICC profile.

Start Photoshop Elements 8 and bring up the color settings window by clicking **Edit → Color Settings**.



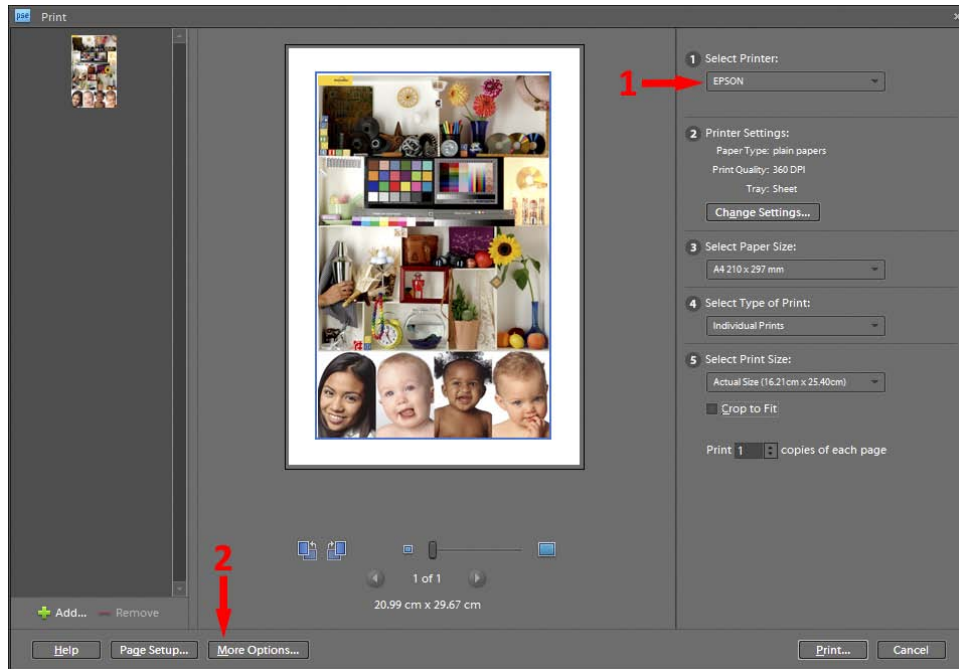
Ensure that **'Always Optimize for Printing'** is selected and click **'OK'**

Photoshop Elements RGB working space is now set.

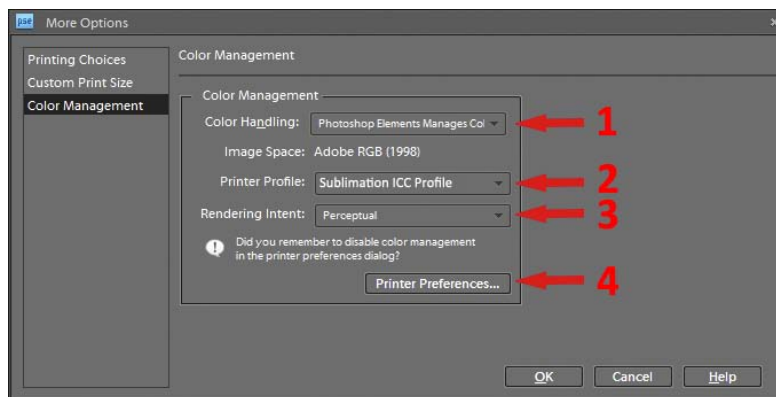
You can now work on your images as normal. Follow the subsequent steps for printing using the appropriate sublimation ICC profile.

Printing with the 1400 Sublimation ICC Profile in Photoshop Elements 8

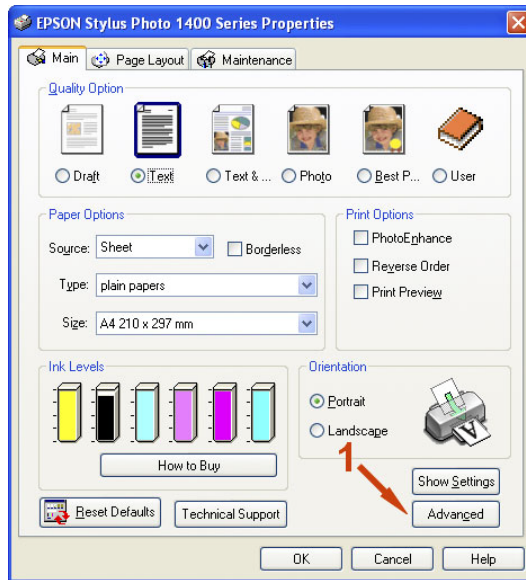
When your image is ready to print open the print preview dialogue, Click **File → Print**



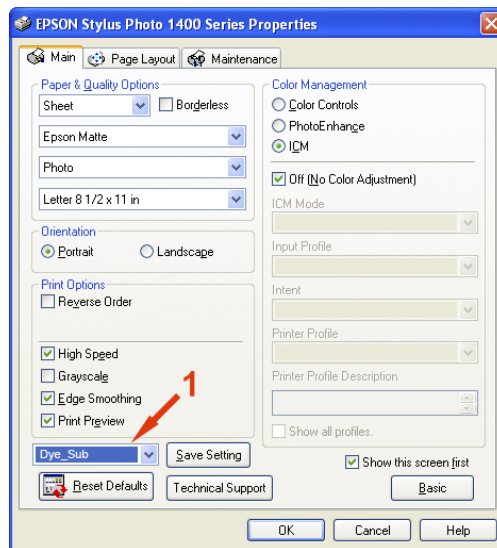
- 1 Select the **'EPSON 1400 Series'** printer from the drop down box indicated at point 1.
- 2 Click **'More Options...'** indicated at point 2 to open the advanced options dialogue.



- 1 Select **'Photoshop Elements Manages Colors'** from **'Color Handling'**.
- 2 Select the appropriate sublimation ICC profile from **'Printer Profile'**.
- 3 Select **'Perceptual'** from **'Rendering Intent'**.
- 4 Click **'Printer Preferences'**, as shown below.



- 1 Click the **'Advanced'** tab to open the advanced printer settings.



- 1 Select the preset driver settings that have already been created from the drop down menu indicated at point 1.

Click **'OK'** to return to the **'More Options'** dialogue.

Click **'OK'** to return to the **'Print Preview'** dialogue.

Click **'Print'**.

The image will now be printed using the configured Epson driver with the sublimation ICC profile.