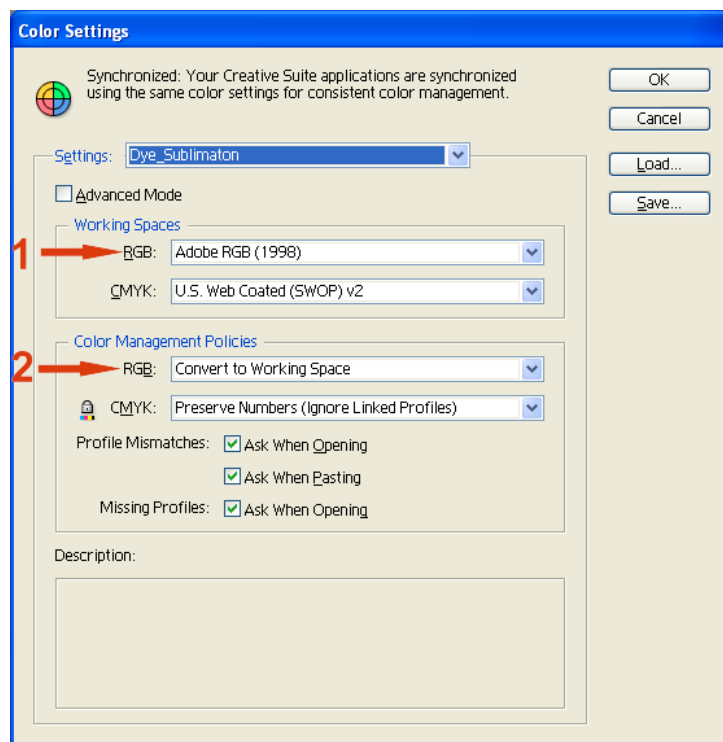


# Configuring Illustrator CS4 Color Settings for Use with Sublimation on EPSON 1400

Illustrator's color space needs to be set to the working space of which the sublimation ICC profile was created. This then allows for a more accurate screen display of your images. The accuracy of the displayed image on your monitor will highly be dependent on the quality of your monitor and more important a calibrated monitor ICC profile.

Start Illustrator CS4 and bring up the color settings window by clicking **Edit → Color Settings**.



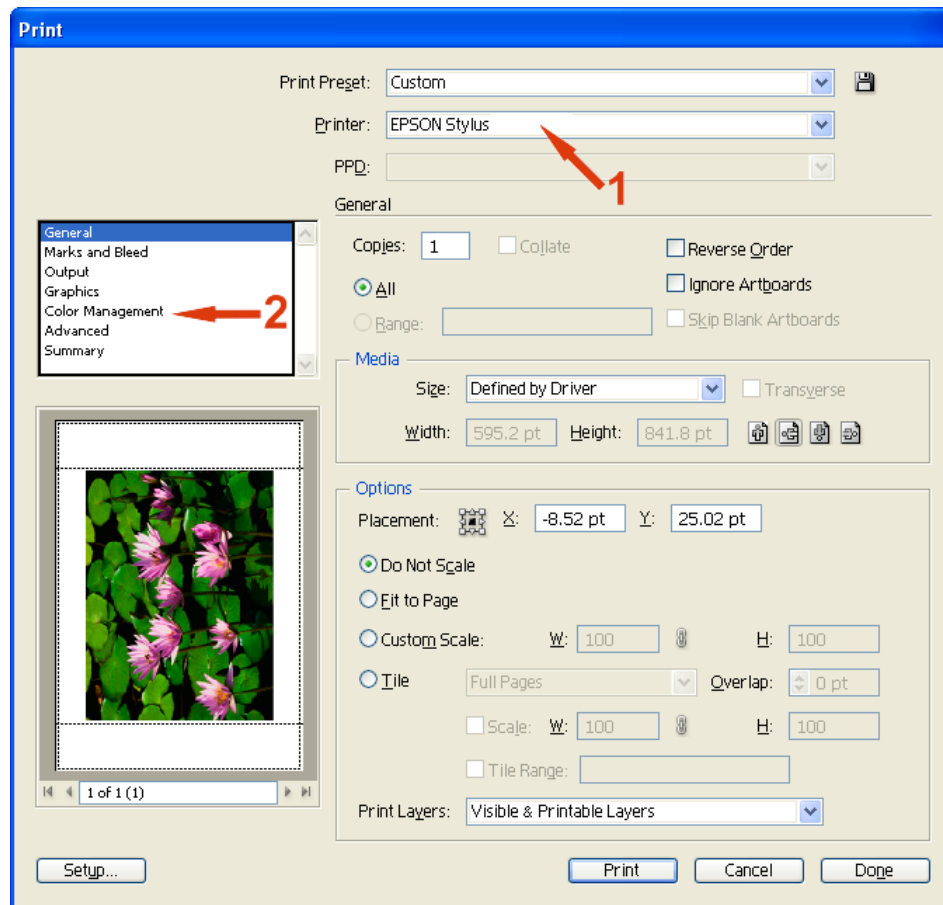
- 1** Set the **'Working Spaces' – 'RGB'** to **'Adobe RGB (1998)'**
  - 2** Set the **'Color Management Policies' – 'RGB'** to **'Convert to Working Space'**
- Leave the other settings as shown above Click **'Save'** then name the settings appropriately.

Illustrator's RGB working space is now set and adobe gamma is controlling your monitor profile.

# Printing with the 1400 Sublimation ICC Profile in Illustrator CS4

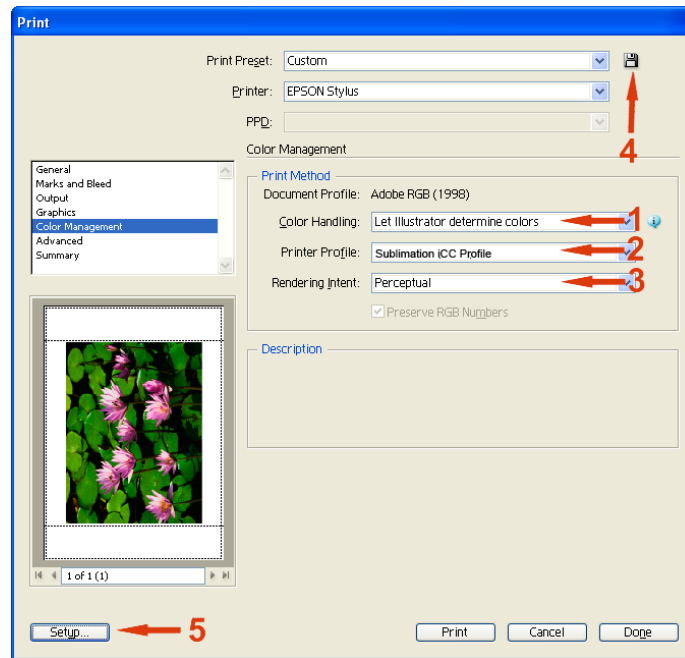
When your image is ready to print, click **File → Print**

The following **'Print'** dialogue will open.



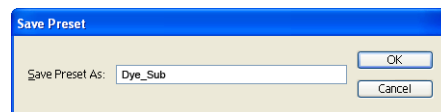
- 1** Select the **'EPSON Stylus 1400 Series'** printer from the **'Printer'** drop down box indicated at point 1.
- 2** Select **'Color Management'** from the list indicated at point 2.

The color management settings will now be shown within the **'Print'** dialogue. Ensure that the settings selected are the same as below.



Within the **'Print Method'** section:

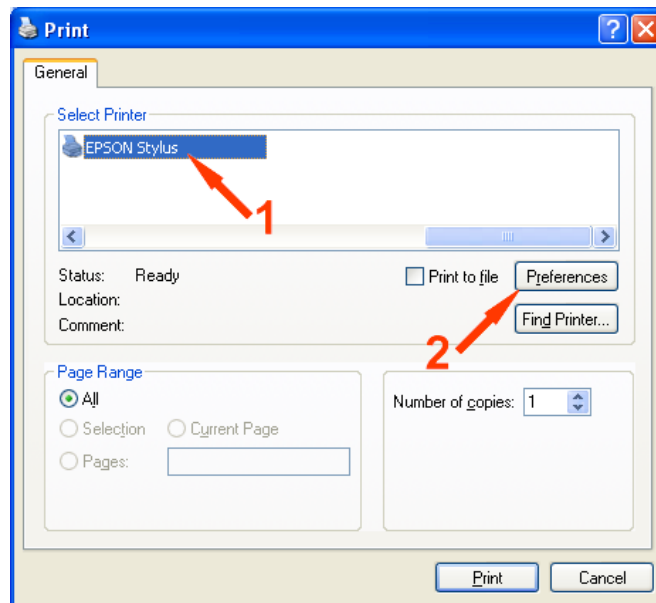
- 1 Change the **'Color Handling'** to **'Let Illustrator determine colors'** indicated at point 1.
- 2 Change the **'Printer Profile'** to the **Sublimation ICC Profile** indicated at point 2.
- 3 Change the **'Rendering Intent'** to **'Perceptual'** indicated at point 3.
- 4 Click the **'Save Preset...'** button indicated at point 4, the following window will appear:



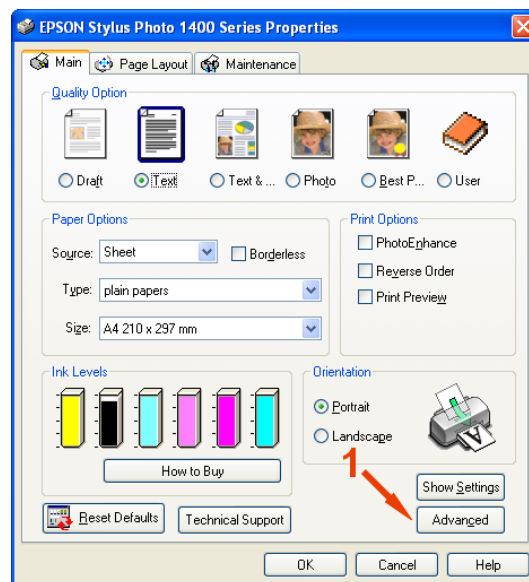
Give this preset an appropriate name, so that in the future you can select this preset from the **'Print Preset'** drop down box at the top so that the settings don't have to be entered every time.

- 5 Click the **'Setup...'** button indicated at point 5; this will open the printer setup dialogue shown below.

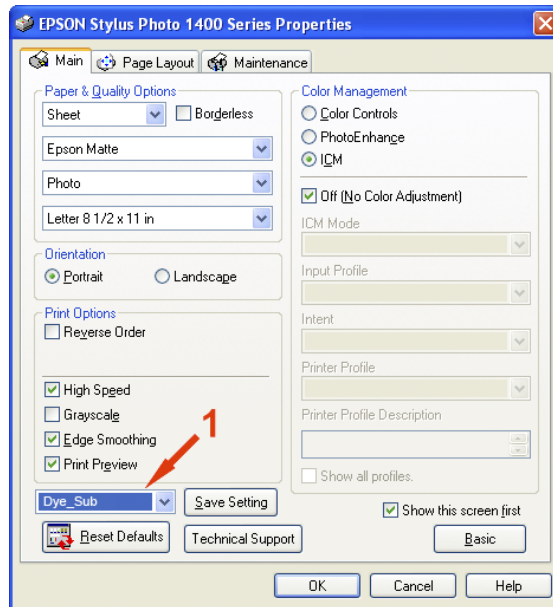
**Note:** If you don't see any reference to sublimation ICC profile in the print space list means the ICC profile is not installed in your system or Photoshop has not been restarted since the profile was installed, this will require you to restart Photoshop.



- 1 Select the **'EPSON Stylus 1400 Series'** printer from the menu indicated at point 1.
- 2 Click the **'Preferences'** button indicated at point 2 to open the printer preferences shown below.



- 1 Select the **'Advanced'** tab indicated at point 1; this will open the advanced driver settings.



- 1 Select the preset driver settings that have already been created from the drop down menu indicated at point 1.

Click **'OK'** to return to the **'Print'** dialogue, then click **'Print'** to return to the **'Print Setup'** dialogue. Finally when you are ready to print click **'Print'** and the image will be sent to print.