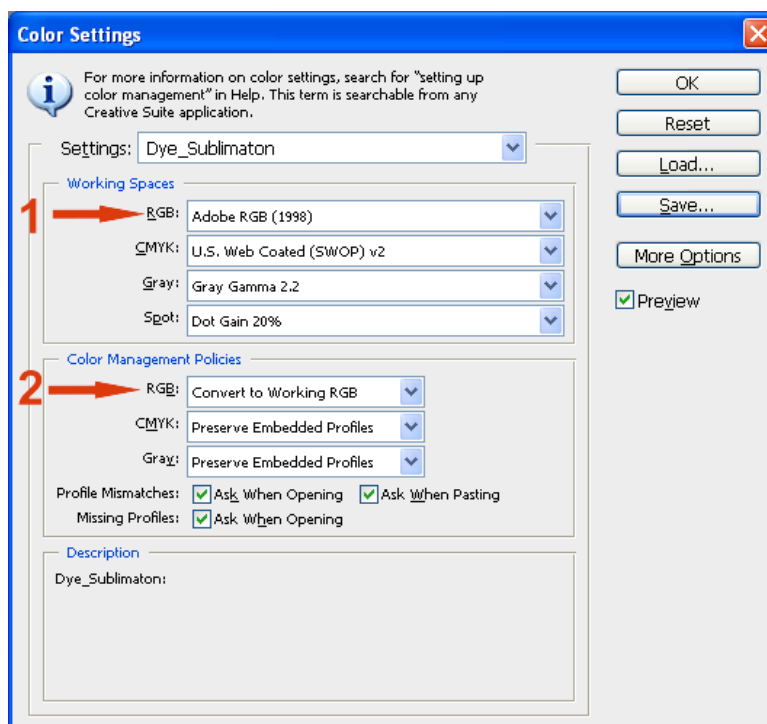


# Configuring Photoshop CS4 Color Settings For Use With Sublimation On EPSON 1400

Photoshop's color space needs to be set to the working space of which the sublimation ICC profile was created. This then allows for a more accurate screen display of your images. The accuracy of the displayed image on your monitor will highly be dependent on the quality of your monitor and more important a calibrated monitor ICC profile. Photoshop's Adobe Gamma will allow you to calibrate and save an ICC profile for your monitor.

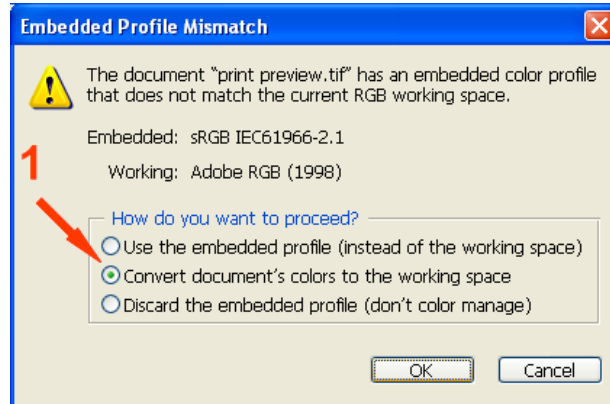
Start Photoshop CS4 and bring up the color settings window by clicking **Edit → Color Settings**.



- 1** Set the 'Working Space' – 'RGB': to 'Adobe RGB (1998)'
  - 2** Set the 'Color Management Policies' – 'RGB' to 'Convert to Working RGB'
- Leave the other settings as shown above Click 'Save' then name the settings appropriately.

Photoshop's RGB working space is now set.

When opening images in Photoshop CS4, you may encounter a profile mismatch Warning.

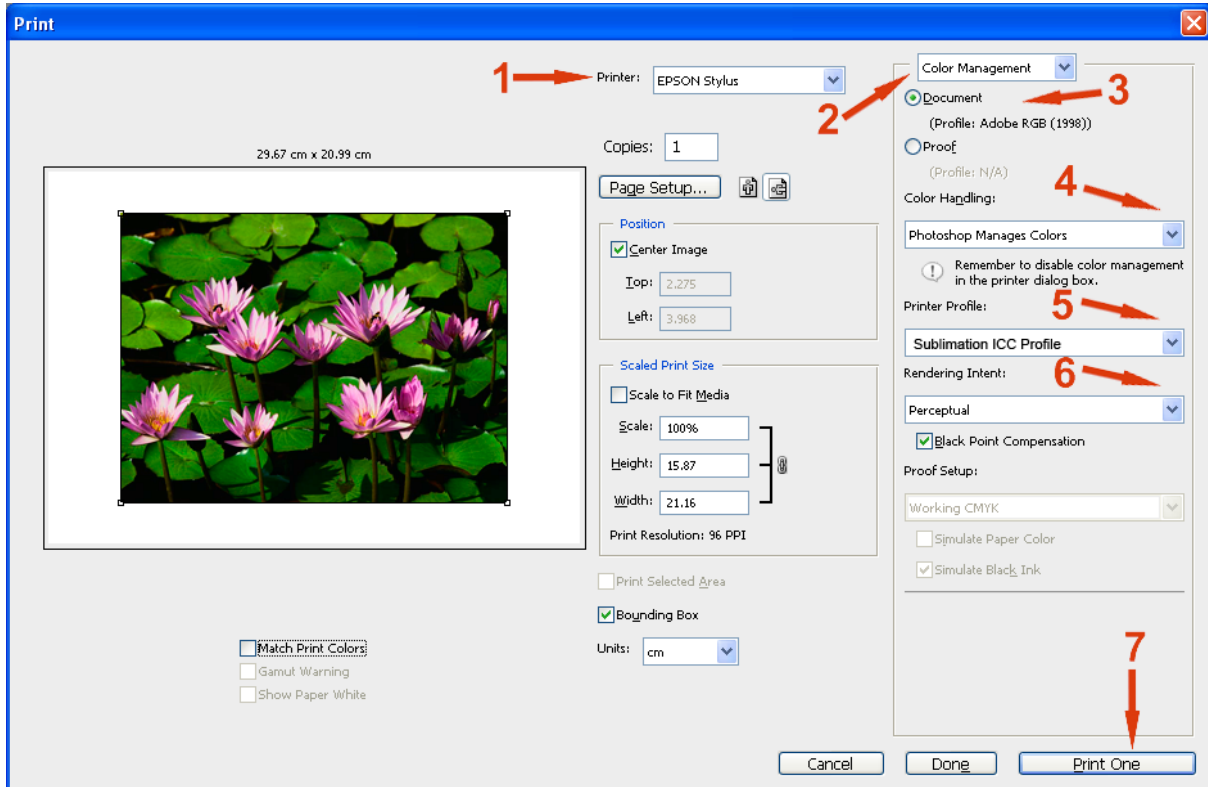


When the above Embedded Profile Mismatch screen will appears select **'Convert document's colors to the working space'**

You can now work edit images as normal. Follow the subsequent steps for printing using the sublimation ICC profiles.

# Printing with the 1400 Sublimation ICC Profile in Photoshop CS4

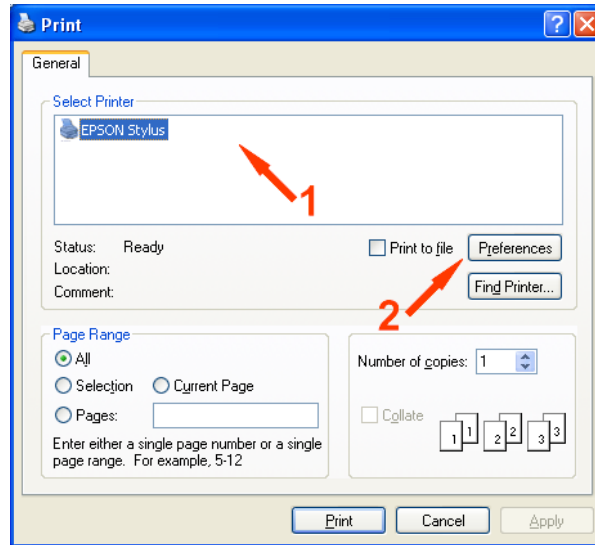
When your image is ready to print, Click **File** → **Print**



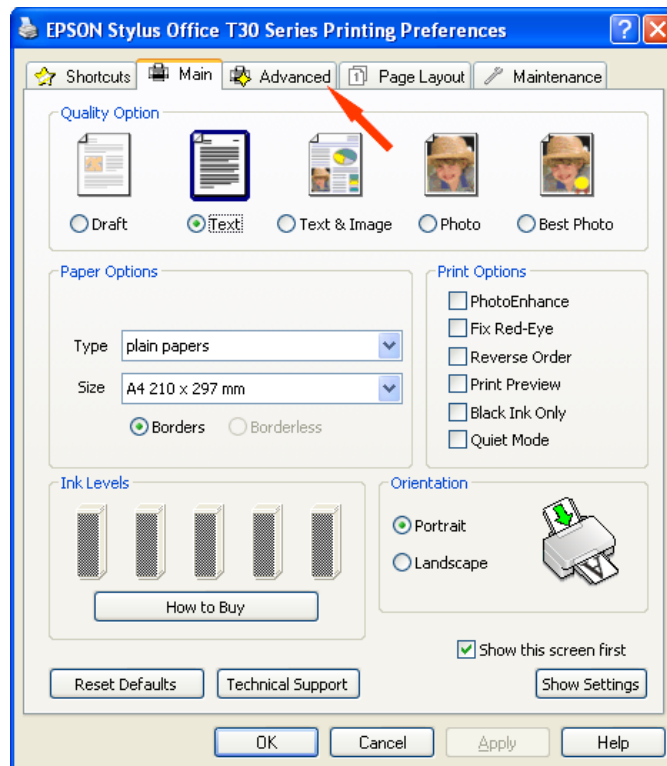
- 1 Select the EPSON Printer from the drop down box.
- 2 Select the **'Color Management'** option from the drop menu.
- 3 Select **'Document'**.
- 4 At **'Color Handling'** select **'Photoshop Manages Color'**.
- 5 At **'Printer Profile'** select the sublimation ICC profile for the EPSON 1400 Printer.
- 6 At **'Rendering Intent'** select **'Perceptual'**.
- 7 You can now press **'Print'**.

**Note:** If you don't see any reference to sublimation ICC profile in the print space list this means the ICC profile is not installed in your system or Photoshop has not been restarted since the profile was installed, this will require you to restart Photoshop.

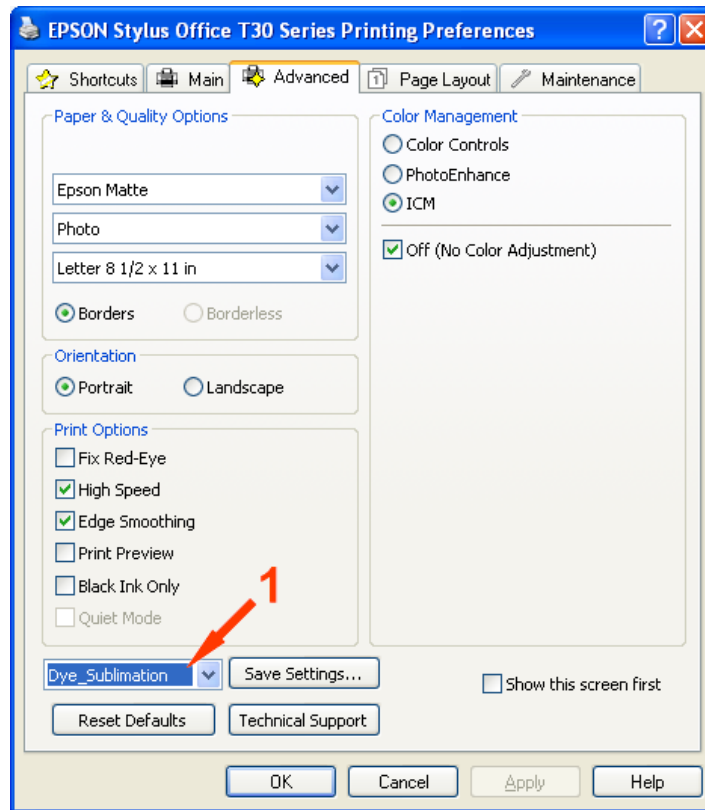
Once you have clicked print the following screen will open.



- 1 Select the printer that you will be using from the menu, indicated at point 1.
- 2 Select '**Preferences**' shown at point 2, this will open the '**Printer Properties**' window shown below.



Select the '**Advanced**' tab shown above to open the advanced options shown below.



**1** As indicated in the **'Printer Driver'** window above select the **'Sublimation'** print profile, ensure that all the settings are the same as above.

Click **'OK'** to return to the previous **'Print'** window and click **'OK'**. Photoshop will now print your image using the sublimation ICC profile combined with the configured Epson Print Driver.