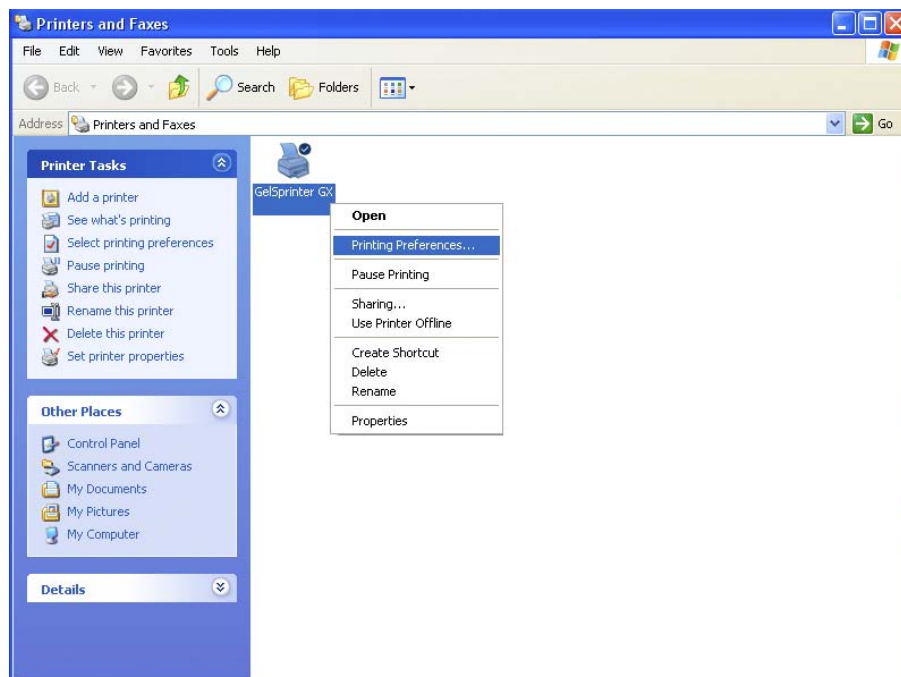


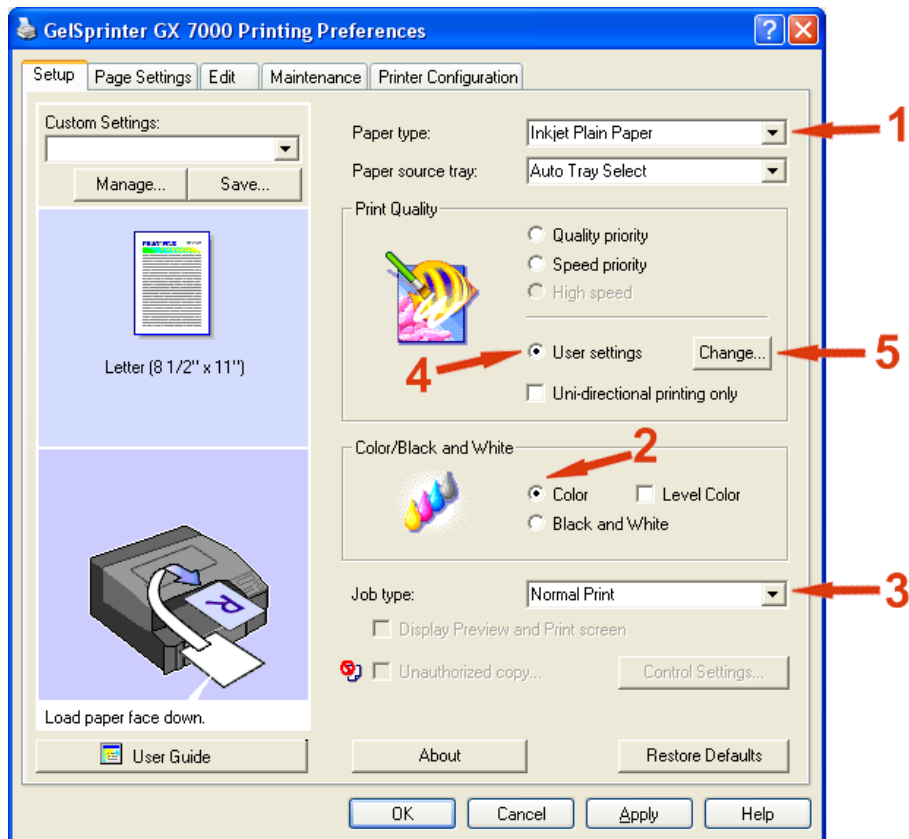
# Configuring the Ricoh GX7000 Print Driver for ICC Profile

To configure the print driver for the Ricoh GX7000 follow the subsequent instructions:

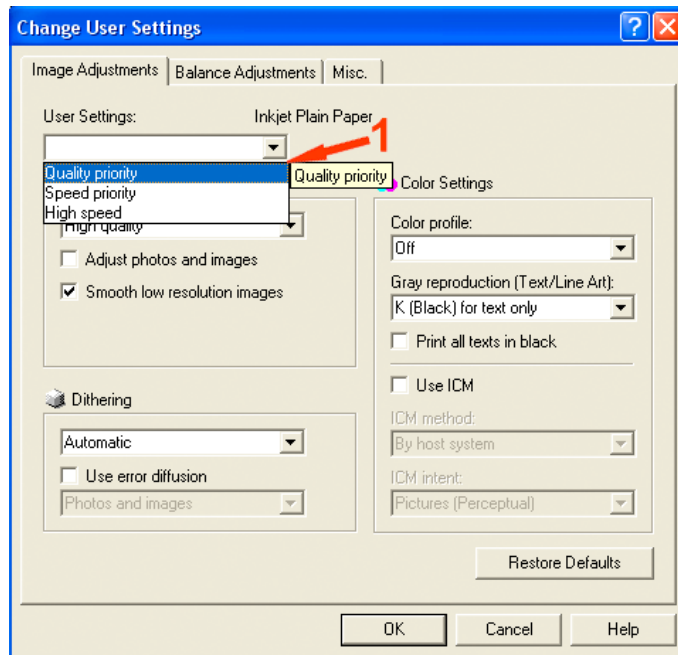
1. Open **'Printer & Faxes'**: Start → Control Panel → Printers & Faxes
2. Open the **'Printing Preferences'** window: Right click the icon **'Gelsprinter GX7000'** and select **'Printing Preferences'**.



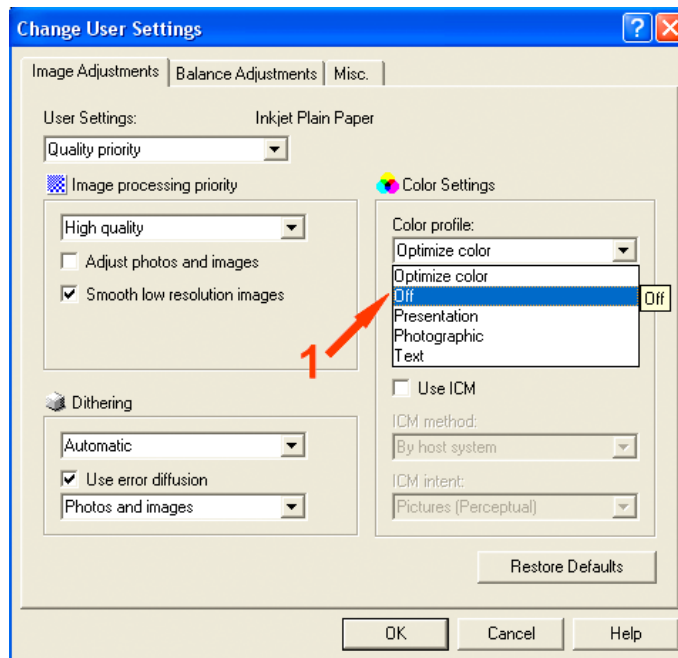
3. The Printer Driver Properties window will now be open:



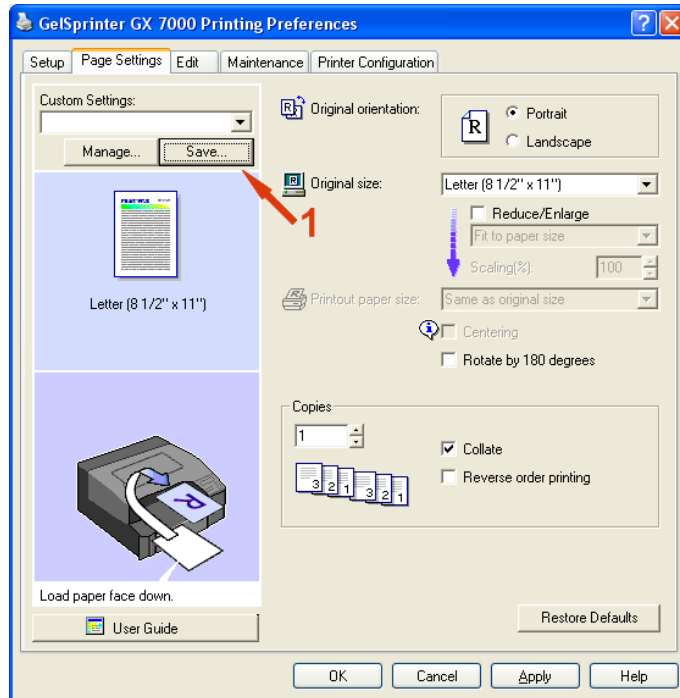
- 1 Select 'Inkjet Plain Paper'
  - 2 Check 'Color'
  - 3 Select 'Normal Print'
  - 4 Check 'User Settings'
  - 5 Click 'Change'
- The following window will open.



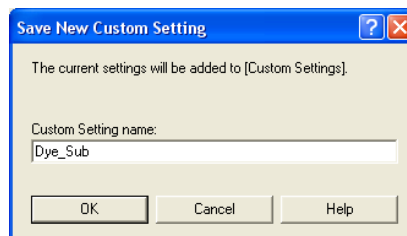
- 1 Select **'Quality Priority'** from the drop down menu.



- 1 Select **'Off'** from the drop down menu.  
Click **'OK'**.



- 1 From the 'Page Settings' tab click 'Save'.



4. Enter an appropriate name, and click 'OK'.

**Note:** The Printer Driver does not save the 'Paper Settings' information so this will need to be set every time you change the paper size you are using. There is also no mirror option so you will have to flip the image horizontally in your graphics software.

Your Ricoh Printer Driver is now configured.