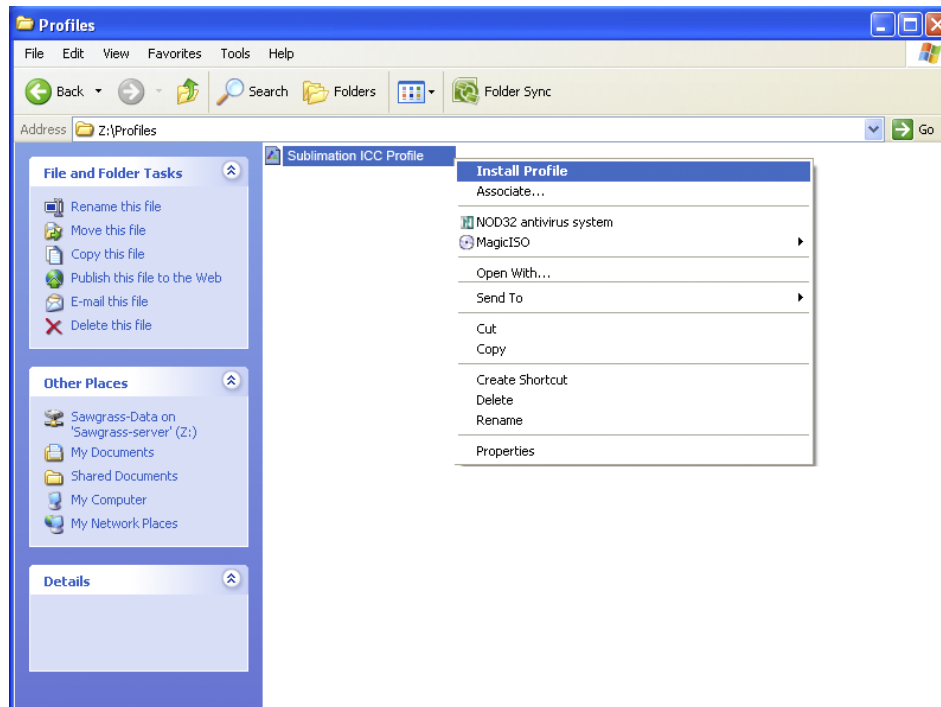


Installation of Sublimation ICC Profile

To install the ICC Profile for use with your Dye Sublimation ink, please follow the subsequent instructions:

1. Browse the CD to locate the appropriate ICC Profile located in the '**Profiles & Profiles Installation Guides**' folder and '**Right Click**' on the icon, and select '**Install Profile**'.



The Profile is now installed on your PC (Note: no confirmation is shown on screen). To confirm the profile is installed '**Right Click**' on the file again, the menu will show '**Uninstall Profile**' don't choose anything on this menu, just click off screen to cancel.

Exceptions: Some versions of Windows 95 and 2000 will not show "Install Profile" on the context menu.
If this is the case with your PC, the ICC file will need to be manually copied to your system.

Copy the file **Sublimation ICC Profile** from the CD to:
Win 95,98,98se,ME---- to ----C:/Windows/System/Color
Win NT4----to---- C:/winnt/system32/color
Win 2000---to----C:/winnt/system32/spool/drivers/color
Win XP, Vista, 7 ----to----C:/windows/system32/spool/drivers/color

